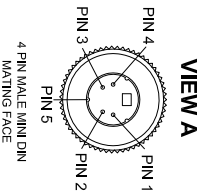
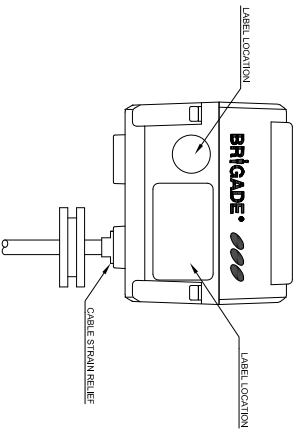
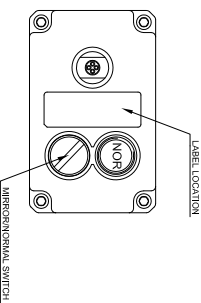
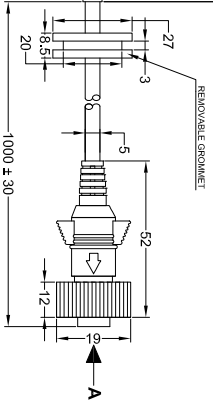
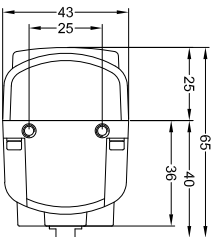
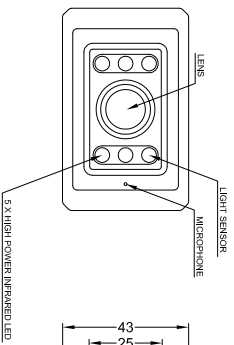
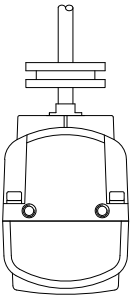
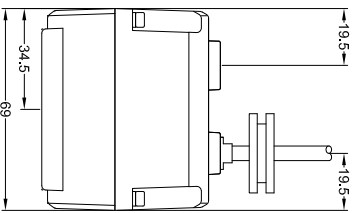


Rev/No	Revision note	Date	Signature	Checked
1.	PINOUT & CABLE COLOURS CORRECTED.	11/05/10	DK	GA



PIN #	WIRE COLOUR	DESCRIPTION
1	CLEAR	VIDEO
2	BLUE	NO CONNECTION
3	RED	AUDIO
4	YELLOW	12 VDC
5	GREEN	GROUND

- NOTES:**
1. DIMENSIONS IN MM.
 2. REFER TO "PRODUCT SPECIFICATION" FOR MORE DETAILS.
 3. REFER TO "COMPONENT DRAWINGS FOR COMPONENT DETAILS."
 4. ENSURE SELF AMALGAMATING TAPE IS USED DURING INSTALLATION.

PROPRIETARY NOTICE
 THIS DESIGN AND TECHNICAL INFORMATION APPEARING ON THIS DRAWING IS THE PROPERTY OF BRIGADE ELECTRONICS PLC AND IS DISCLOSED IN CONFIDENCE. IT IS NOT TO BE COPIED, REPRODUCED, REVEALED TO OR APPROPRIATE BY OTHERS, EITHER IN WHOLE OR IN PART WITHOUT THE EXPRESS WRITTEN CONSENT OF BRIGADE ELECTRONICS PLC.

ASSEMBLY PLANT REF: TBD

Item#	Quantity	Title/Name, designation, material, dimension etc	Article No./Reference
Designed by M.BUTLER	Checked by B.CHADS	Approved by - date DIERAL	Date 20/04/2010
BRIGADE ELECTRONICS		BE-800C-C (#3243)	Scale N/A
		BE-007047-01-10	Edition A
			Sheet 1/1